

Akitech Solutions Via Valle Pozzo 2/a - 00041 Albano Laziale - (Rm) Italy
 info@racingbikeitaly.it
 Made in Italy

MODELLI - MODELS

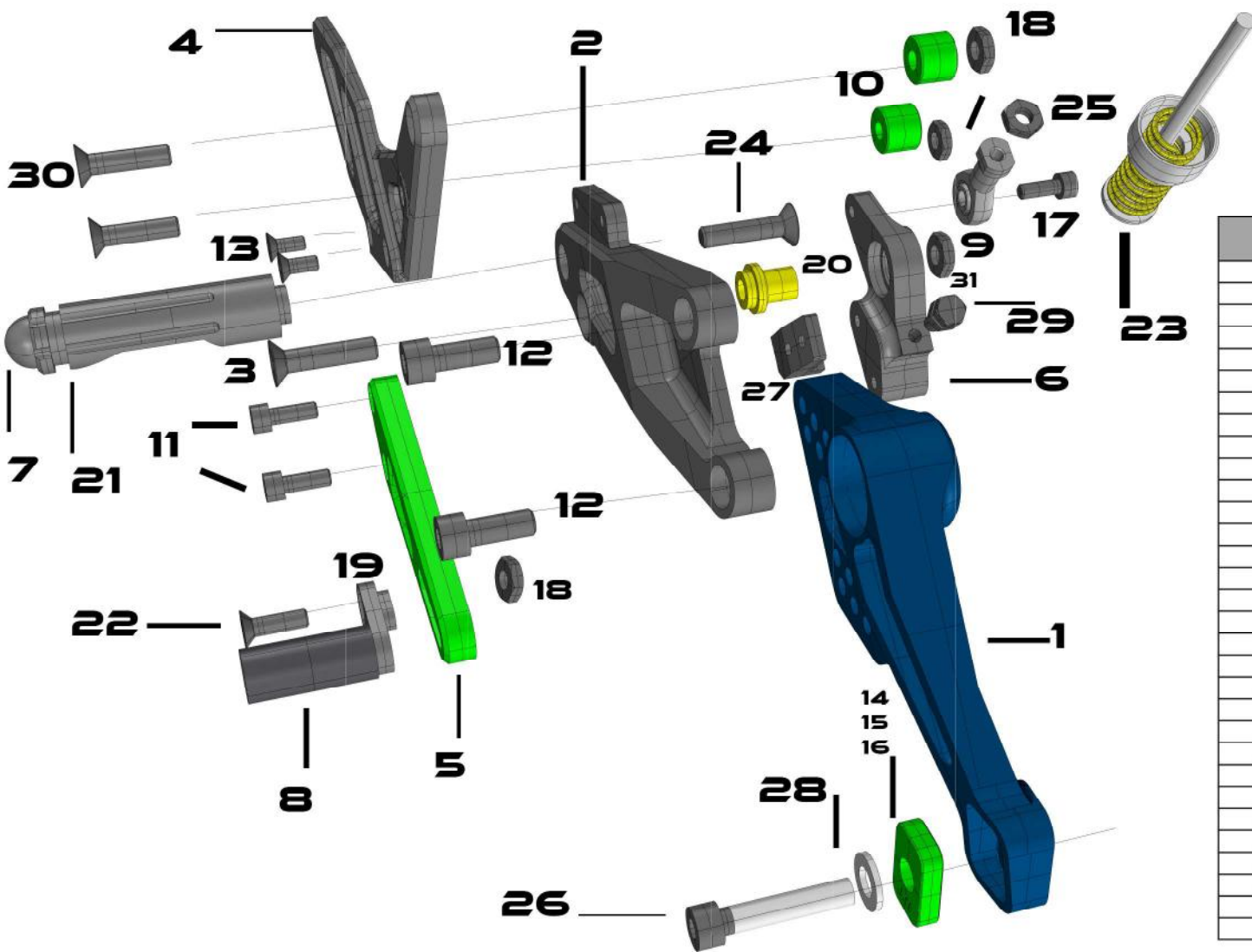
APRILIA RS 660 - 2021 >

APRILIA TUONO 660 - 2021 >

APRILIA TUONO 660 - 2021 >

CODE - A105RN

LATO DESTRO / RIGHT SIDE



ID	DESCRIZIONE DESCRIPTION	PZ QTY	CODICE CODE
1	Piastra arretratore dx - rear set sdapter plate right	1	R010-A105RF
2	Piastra poggia piede dx - footpeg support right	1	R013-A105
3	Vite testa svasata - bolt	1	VTT 8 x 40
4	Supporto pompa - pump support	1	R014-A105
5	Leva freno - brake lever	1	R020-A105
6	supporto leva freno - brake lever support	1	SR020-A105
7	Tappo poggiapiede - footpeg cap	1	R017-A105
8	Puntalino - front peg	1	R022
9	Uniball femmina dx - Uniball female right thread	1	R026
10	Spessore - Thickness	2	SPS 11 x 12
11	Vite testa cilindrica - bolt	2	6 X 20
12	Vite testa cilindrica - bolt	2	VTC 8 x 16
13	Vite testa svasata - bolt	2	VTS 5 x 12
14	Inserto offset 0	1	TAC-0
15	Inserto offset 1.50	1	TAC-1
16	Inserto offset 2.50	1	TAC-2
17	Vite testa tonda	1	VTT 6 x 18
18	Dado autobloccante M6 -hex nut	3	DAB6
19	Regolazione puntalino - front peg adapter	1	SPP-R022
20	Spessore - thickness	1	SPS-R020
21	Poggiapiede sinistro - left foopeg	1	R027
22	Vite testa svasata - bolt	1	VTS 6 x 35
23	Kit molla richiamo freno - Brake recall spring kit	1	MOL-A105
24	Vite testa svasata - bolt	1	8 x 35
25	Dado M6 -hex nut	1	DAD6
26	Vite testa cilindrica - bolt	1	VTC 10 x 100
27	Supporto interruttore stop - Stop switch support	1	SW-A105
28	Rondella ondulata originale - Original wavy washer	1	OEM
29	Vite testa esagonale - bolt	1	VTE 6 x 14
30	Vite testa svasata - bolt	2	VTE 6 x 35
31	Dado autobloccante M8 -hex nut	1	DAB8

MODELLI - MODELS

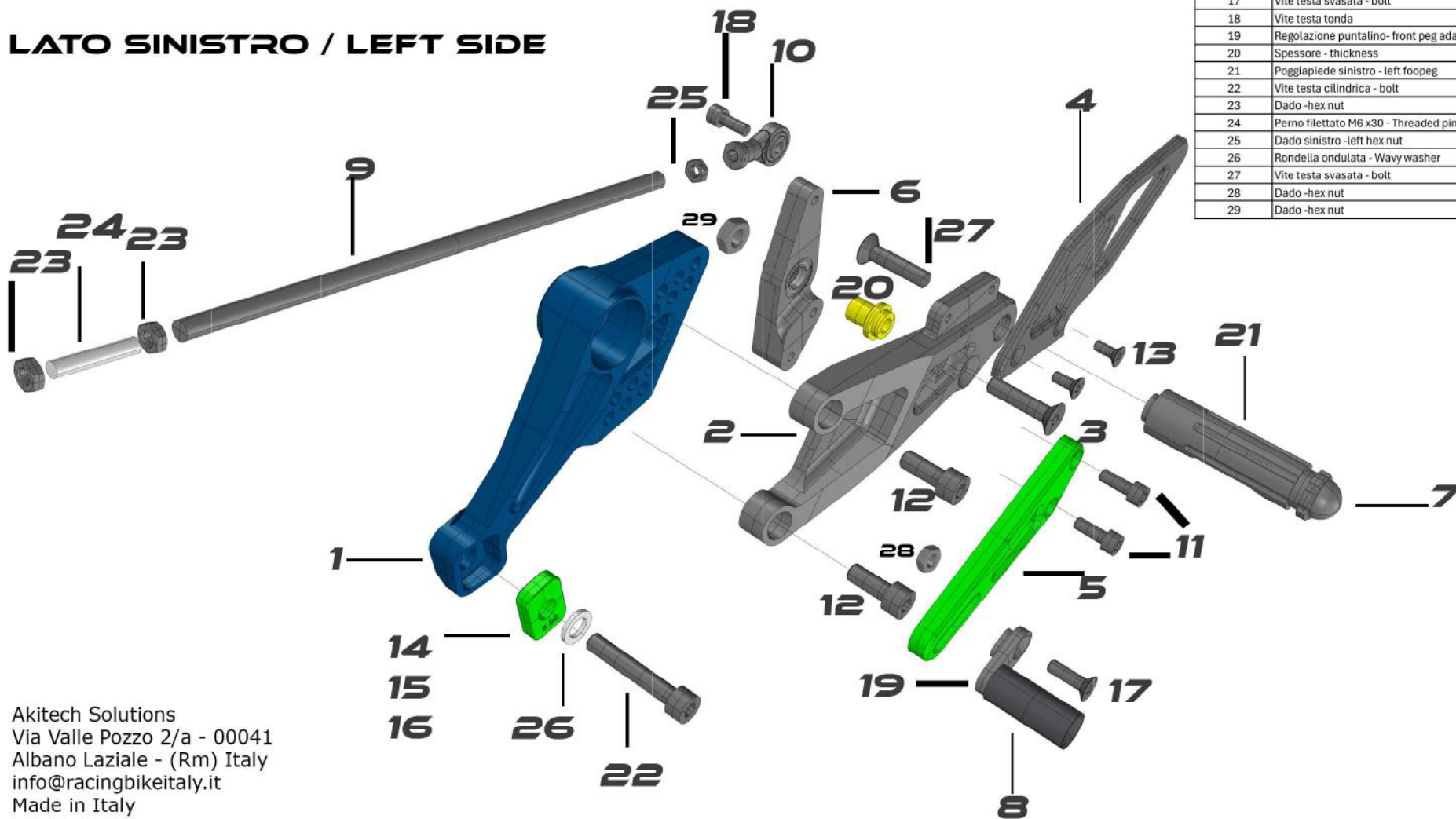
APRILIA RS 660 - 2021 >

APRILIA TUONO 660 - 2021 >

APRILIA TUONO 660 - 2021 >

CODE - A105RN

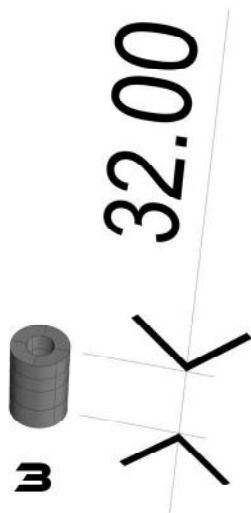
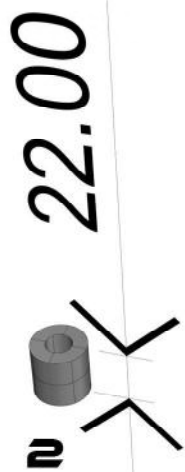
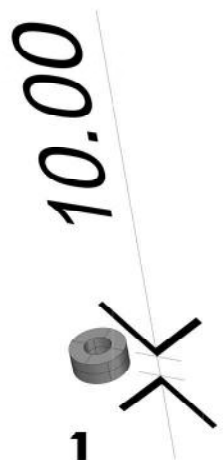
LATO SINISTRO / LEFT SIDE



ID	DESCRIZIONE DESCRIPTION	PZ QTY	CODICE CODE
1	Piastra arretratore sx- rear set adapter plate left	1	R011-A105RF
2	Piastra poggia piede - footpeg support	1	R012-A105
3	Vite testa svasata - bolt	1	VTS 8 x 40
4	Paratacco - hell plate	1	R015-A105
5	Leva cambio - shift lever	1	R019-A105
6	supporto leva cambio - support shift lever	1	SR019-A105
7	Tappo poggiapiede - footpeg cap	1	R017-A105
8	Puntalino - front peg	1	R022
9	Asta cambio - shift bar	1	R021-210
10	Uniball maschio sx - Uniball mate left thread	1	R024
11	Vite testa cilindrica - bolt	2	6 X 20
12	Vite testa cilindrica - bolt	2	VTC 8 x 16
13	Vite testa svasata - bolt	2	VTS 5 x 12
14	Inserito offset 0	1	TAC-0
15	Inserito offset 1.50	1	TAC-1
16	Inserito offset 2.50	1	TAC-2
17	Vite testa svasata - bolt	1	VTS 6 x 16
18	Vite testa tonda	1	VTT 6 x 18
19	Regolazione puntalino - front peg adapter	1	SPP-R022
20	Spessore - thickness	1	SPS-R020
21	Poggiapiede sinistro - left footpeg	1	R028
22	Vite testa cilindrica - bolt	1	VTC 10 x 100
23	Dado - hex nut	2	DA6
24	Perno filettato M6 x30 - Threaded pin M6x30	1	BAR30
25	Dado sinistro -left hex nut	1	DAS6
26	Rondella ondulata - Wavy washer	1	OEM
27	Vite testa svasata - bolt	1	VTS 8 x 30
28	Dado -hex nut	1	DAB6
29	Dado -hex nut	1	DAB8

racingbiker

GabroRacingTeam



ID	DESCRIZIONE DESCRIPTION	PZ QTY	CODICE CODE
1	Spessore - Thickness	1	SPS 24 x 10
2	Spessore - Thickness	1	SPS 24 x 22
3	Spessore - Thickness	1	SPS 24 x 32
4	Tassello offset forcellone - Rear fork offset gusset 0	2	TAF 0
5	Tassello offset forcellone - Rear fork offset gusset 1,5	2	TAF 1.5
6	Tassello offset forcellone - Rear fork offset gusset 2,75	2	OEM
7	PoggiapiEDE corto - Short footpeg	1	R027
8	Puntalino pieghevole sx - folding toe footpegs -left	1	R034
9	Puntalino pieghevole dx toe footpegs right	1	R035