

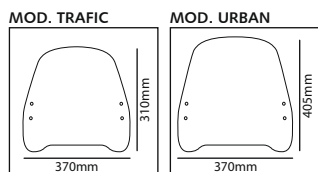
MOTOPLASTIC, S.A.

Molí de la sal, 1 - 08403 Granollers (Barcelona) SPAIN

Tel. 34 93 849 06 33 - Fax 34 93 849 09 88

info@puig.tv - info@puigusa.com

www.puig.tv - www.puigusa.com



### PREVENCIÓN

- Usar agua y jabón neutro para limpiar la pantalla.
- Revisar periódicamente el apriete de la tornillería.
- Estacionar el scooter en dirección al sol, evitando el efecto lupa que puede dañar algunas partes.
- Aparcar si es posible en superficies niveladas.

Gracias por su atención.

### PREVENTION

- Use water and neutral soap to clean the windshield.
- Check the tightening of the fasteners periodically.
- Park the scooter facing the sun, avoiding the sun-reflection effect that may damage some parts.
- Park if possible on even surfaces.

Thanks for your attention.

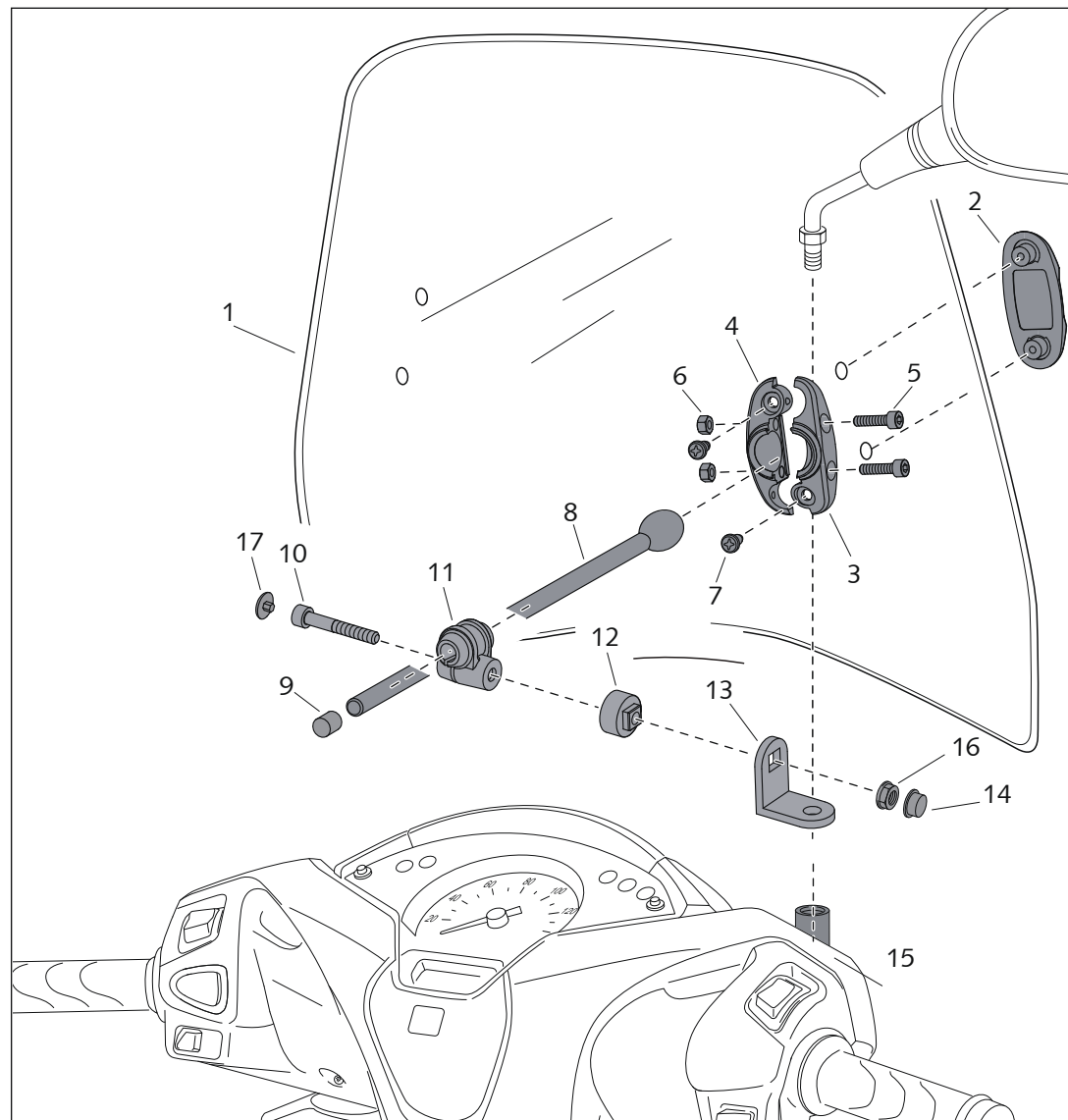
| ID. | DESCRIPCIÓN                       | DESCRIPTION                   | QTY. |
|-----|-----------------------------------|-------------------------------|------|
| 1   | Pantalla                          | Windshield                    | 1    |
| 2   | Tapa exterior                     | Exterior cap                  | 2    |
| 3   | SopORTE rótula exterior           | Ball bearing exterior support | 2    |
| 4   | SopORTE rótula interior           | Ball bearing interior support | 2    |
| 5   | Tornillo allen M5x20 DIN912 inox  | M5x20 DIN912 allen inox screw | 4    |
| 6   | Tuerca M5 DIN982 autofrenado inox | M5 DIN982 lock inox nut       | 4    |
| 7   | Tornillo phillips M5x13           | M5x13 phillips screw          | 4    |
| 8   | Varilla ø9x120 para ref.9681      | ø9x120 Rod for ref.9681       | 2    |
| 8   | Varilla ø9x160 para ref.9682      | ø9x160 Rod for ref.9682       | 2    |
| 9   | Tapón final varilla               | Final bar cap                 | 2    |
| 10  | Tornillo M8x40 DIN912             | M8x40 DIN912 screw            | 2    |
| 11  | SopORTE guía sujeción varilla     | Rod guide support             | 2    |
| 12  | Acoplamiento esquadra             | Coupling angle                | 2    |
| 13  | Esquadra Ref.:581                 | Angle Ref.:581                | 2    |
| 14  | Caperuza plana M8                 | M8 nut cover                  | 2    |
| 15  | Casquillo Ø8xØ14x3'5              | Ø8xØ14x3'5 spacer             | 2    |
| 16  | Tuerca M8 DIN6923                 | M8 DIN6923 nut                | 2    |
| 17  | Tapón tornillo M8 DIN912          | M8 DIN912 screw cap           | 2    |

CARENABRÍS ADAPTABLE A - WINDSHIELD ADAPTABLE TO

**YAMAHA AEROX R '14-**

Mod.: TRAFIC  
Ref.: 9681

Mod.: URBAN  
Ref.: 9682



VER DORSO  
LOOK BACK

