

MOTOPLASTIC, S.A.

Molí de la sal, 1 - 08403 Granollers (Barcelona) SPAIN

Tel. 34 93 849 06 33 - Fax 34 93 849 09 88

info@puig.tv - info@puigusa.com

www.puig.tv - www.puigusa.com



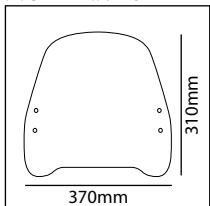
En las revisiones del vehículo es conveniente efectuar también el mantenimiento de apriete de toda la tornillería del carenabrís, especialmente los tornillos que fijan éste al vehículo.

Gracias por su atención.

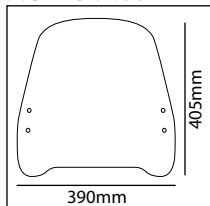
It would be convenient to re-tight the windshield screws, specially the ones that are fixed to the motorcycle, whenever you maintain the vehicle.

Thanks for your attention.

MOD. TRAFIC



MOD. URBAN

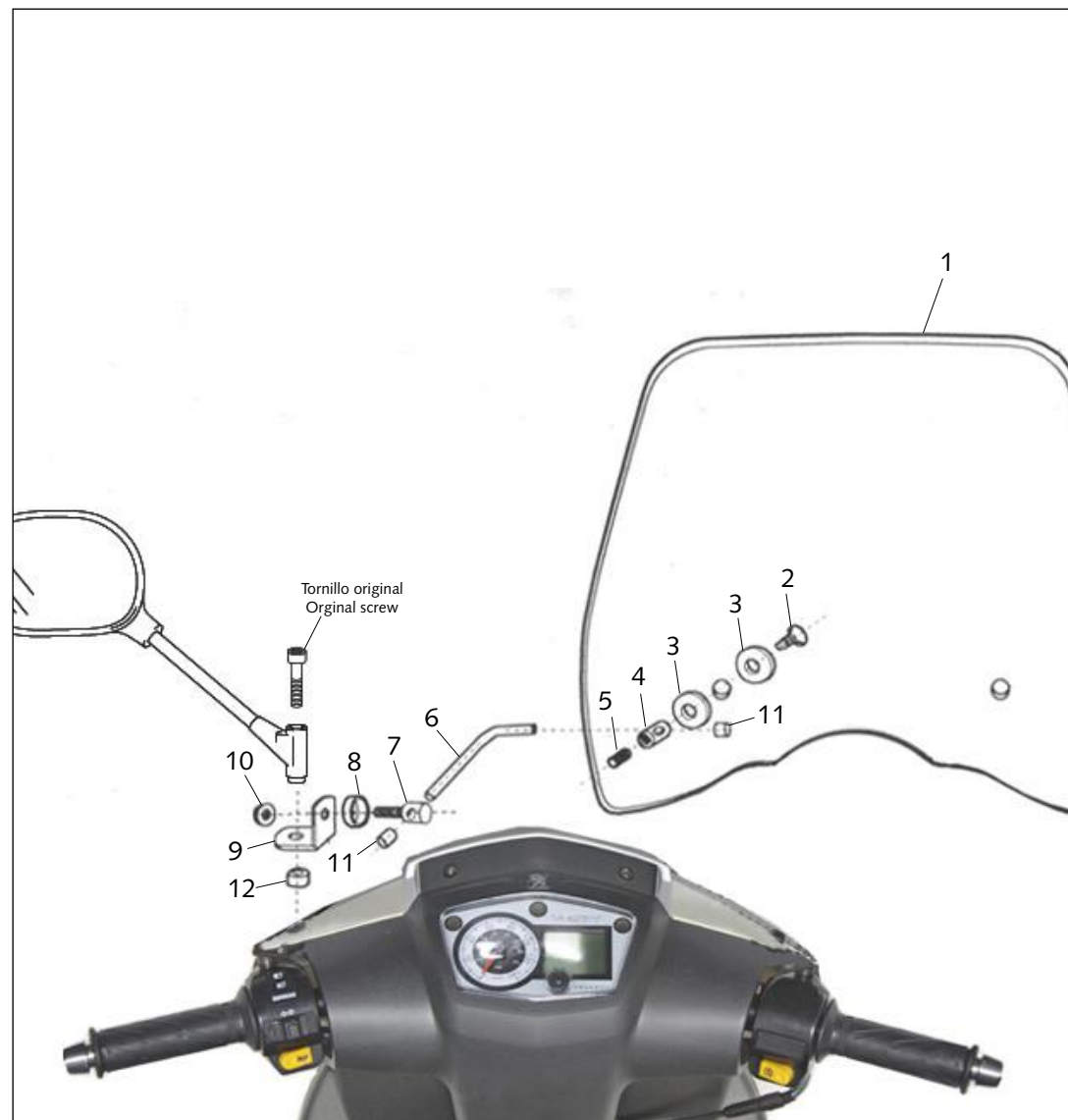


ID.	DESCRIPCIÓN	DESCRIPTION	QTY.
1	Pantalla	Windshield	1
2	Tornillo DIN 7991 M6x22	M6x22 DIN 7991 screw	2
3	Arandela de plástico Ø30	Plastic washer Ø30	4
4	Cilindro con taladro pasante M8x25	Cylinder with drill through M8x25	2
5	Tornillo DIN 913 M8x8	M8x8 DIN 913 screw	2
6	Varilla calibrada Ø9x140	Ø9x140 bar	2
7	Cilindro M8 con taladro	Cylinder M8 with drill through	2
8	Arandela con rebaje	Special washer	2
9	Soporte 45x32x25x3 Ø8xØ8	45x32x25x3 Ø8xØ8 metal support	2
10	Tuerca DIN 6923 M8	M8 DIN 6923 nut	2
11	Tope de plástico	Plastic cover	4
12	Casquillo Ø14 Ø8x7,5	Ø14 Ø8x7,5 arrowhead	2

CARENABRÍS ADAPTABLE A - WINDSHIELD ADAPTABLE TO PEUGEOT VIVACITY '09 - '11

Mod.: TRAFIC
Ref.: 5628

Mod.: URBAN
Ref.: 8466





WARRANTY INFORMATION
PEUGEOT MOTORCYCLES
WARRANTY PERIOD: 2 YEARS OR 10,000 MILES (WHICHEVER COMES FIRST)
WARRANTY COVERAGE: Covers the cost of parts and labor for defects in materials or workmanship.
EXCLUSIONS: Does not cover wear and tear, accidents, misuse, or modifications.
LIMITATIONS: Some components may have shorter warranty periods. See dealer for details.
PEUGEOT MOTORCYCLES

WARRANTY INFORMATION
PEUGEOT MOTORCYCLES
WARRANTY PERIOD: 2 YEARS OR 10,000 MILES (WHICHEVER COMES FIRST)
WARRANTY COVERAGE: Covers the cost of parts and labor for defects in materials or workmanship.
EXCLUSIONS: Does not cover wear and tear, accidents, misuse, or modifications.
LIMITATIONS: Some components may have shorter warranty periods. See dealer for details.
PEUGEOT MOTORCYCLES

VIVACITY

PEUGEOT

Speedometer with dual scales (mph and km/h) and a digital display.

PASSING

↔

P

P