

# HONDA

## CRF1100L AFRICA TWIN '20-/ADVENTURE SPORTS '20-/X-ADV '21-

### M O U N T I N G I N S T R U C T I O N S

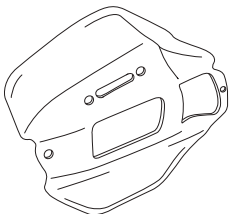
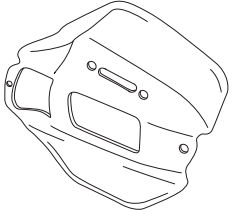




REF 3824

HANDGUARD EXTENSION



ALLEN  
Nº 3  
Nº 5



ID	PIEZA/PART	DESCRIPCIÓN	DESCRIPTION	QTY	REF
1		Extensió de paramanos derecho	Right handguard extension	1	3824W/H/FM3
2		Extensió de paramanos izquierdo	Left handguard extension	1	3824W/H/FM3
3		Tornillo Allen M5x20 Ø11 ISO 7380	M5x20 Ø11 ISO 7380 Allen screw	4	TORNI-I7380-730
4		Arandela nylon M5x1	M5x1 Nylon washer	4	ARNV0000000245
5		Tapón tornillo M5 ISO 7380	M5 ISO 7380 screw cap	4	TAPON-----85
6		Silentblock M5	M5 silentblock	2	SILENBTM5-046/1

# HONDA

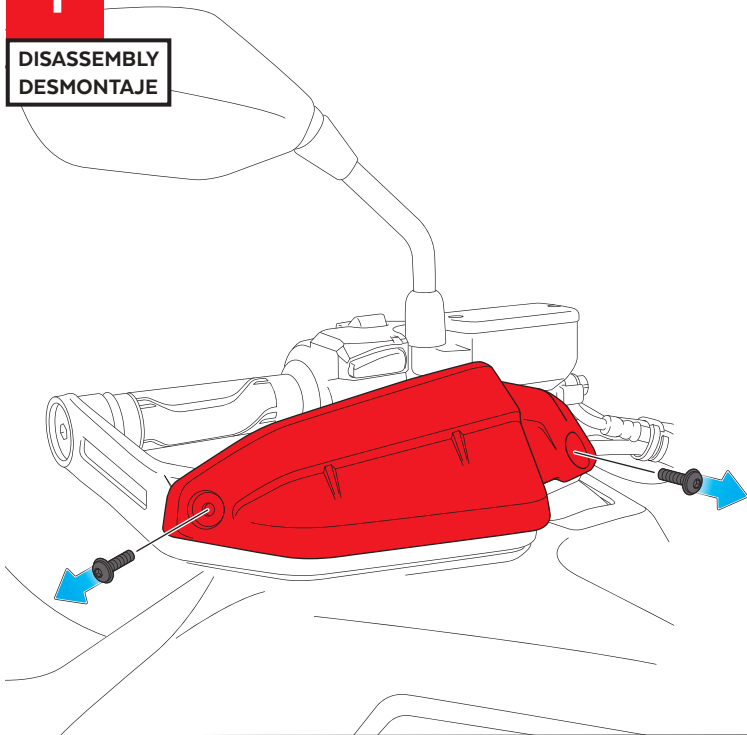
## CRF1100L AFRICA TWIN '20-/ADVENTURE SPORTS '20-/ X-ADV '21-

### INSTRUCCIONES DE MONTAJE - MOUNTING INSTRUCTIONS - MONTAGEANLEITUNG

**1**

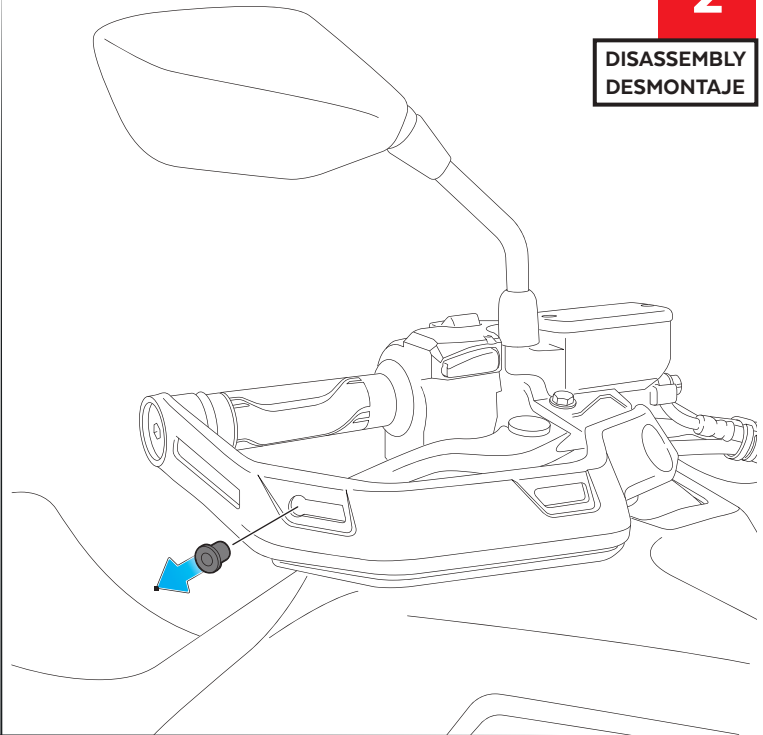
DISASSEMBLY  
DESMONTAJE

Se muestra el montaje del lado derecho a modo de ejemplo, realizar los mismos pasos para el montaje del lado izquierdo.  
The right side assembly is shown as an example, so the same steps can be performed for the left side assembly.



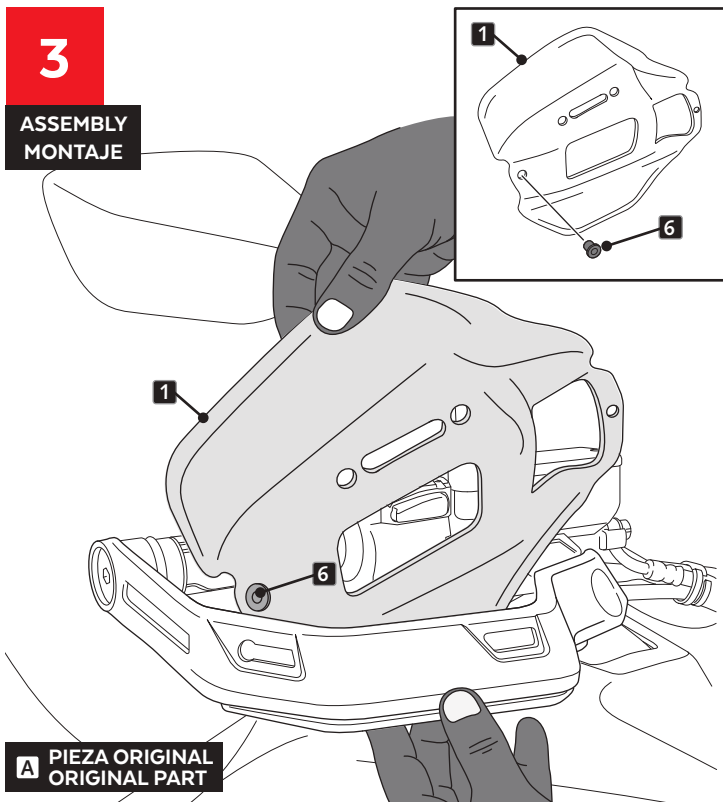
**2**

DISASSEMBLY  
DESMONTAJE



**3**

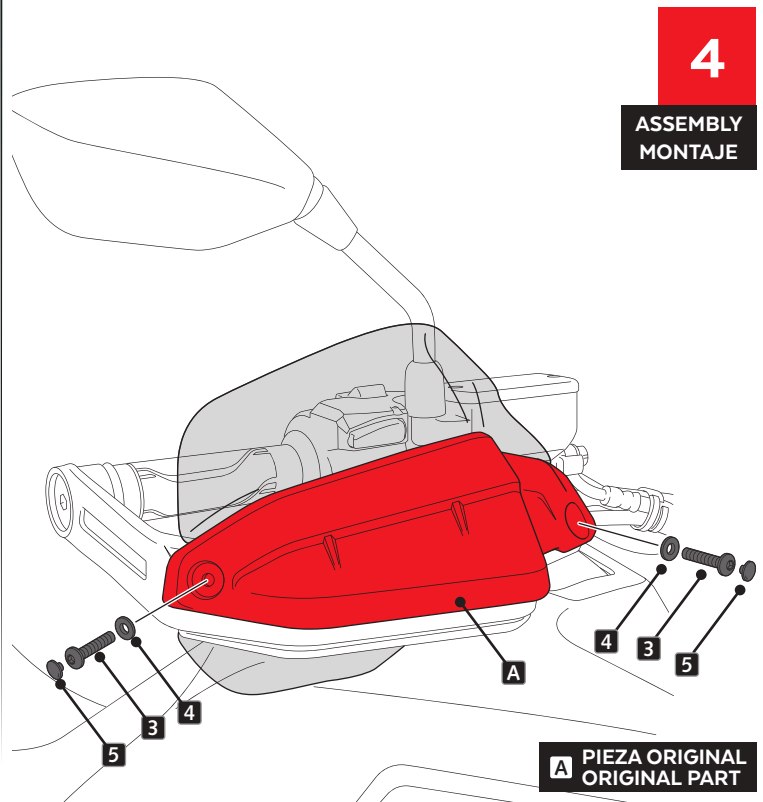
ASSEMBLY  
MONTAJE



**A** PIEZA ORIGINAL  
ORIGINAL PART

**4**

ASSEMBLY  
MONTAJE



**A** PIEZA ORIGINAL  
ORIGINAL PART