

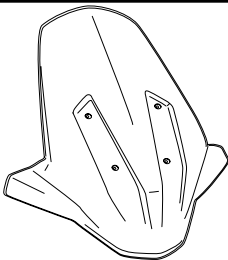

BMW C400X '19-

M O U N T I N G I N S T R U C T I O N S

REF 22410

V-TECH LINE TOURING



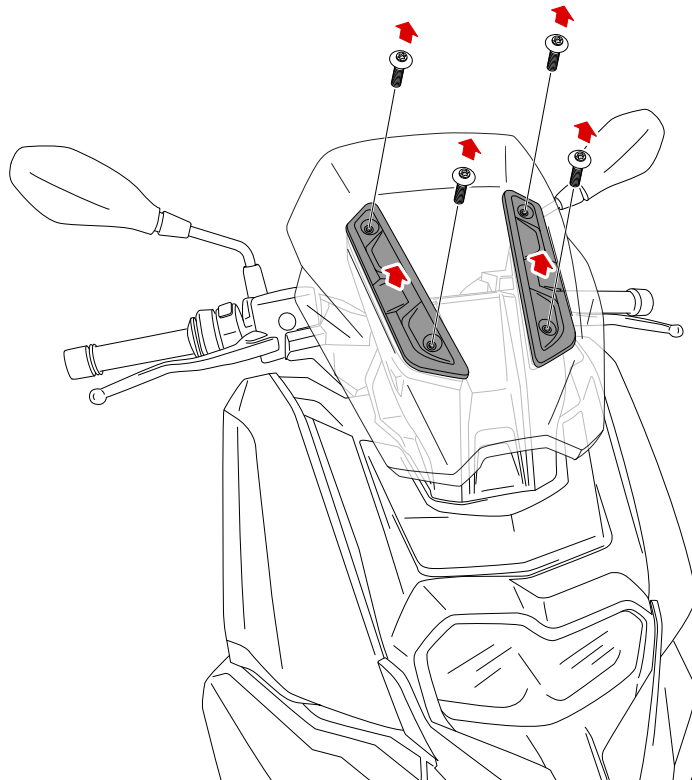
ID.	PIEZA/PART	DESCRIPCIÓN	DESCRIPTION	QTY.	REF.:
1		Cúpula Touring	Touring screen	1	22410W/H/FM3
2		Casquillo negro Ø24xØ6,3x12,7mm	Ø24xØ6,3x12,7mm black spacer	4	CASQUI----22410
3		Arandela cinta de doble cara Ø14xØ8.5	Ø14xØ8.5 double-side adhesive washer	4	ARANDDOBLE22410
4		Tornillo Allen M5x30 Ø11 ISO 7380	M5x30 Ø11 ISO 7380 allen screw	4	TORNI-I7380-767
5		Tapón tornillo M5 ISO 7380	M5 ISO 7380 cap screw	4	TAPON-----85

BMW C400X '19-

INSTRUCCIONES DE MONTAJE - MOUNTING INSTRUCTIONS - MONTAGEANLEITUNG

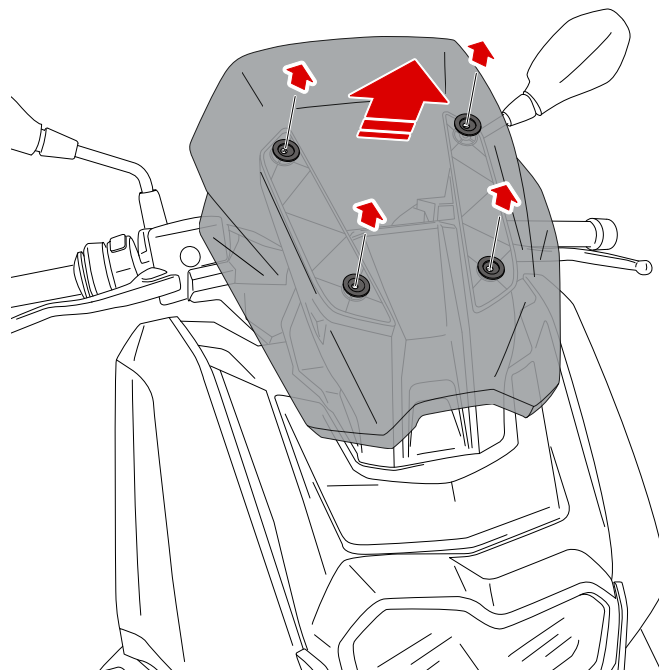
1

DISASSEMBLY
DESMONTAJE



2

DISASSEMBLY
DESMONTAJE



BMW C400X '19-

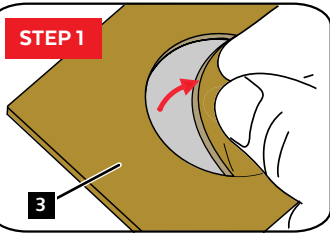
INSTRUCCIONES DE MONTAJE - MOUNTING INSTRUCTIONS - MONTAGEANLEITUNG

3

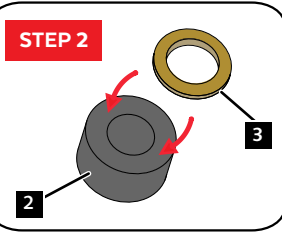
ASSEMBLY
MONTAJE

BMW C400X '25-

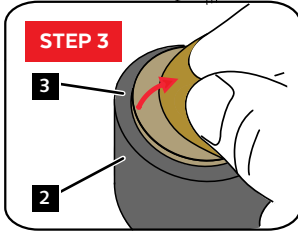
STEP 1



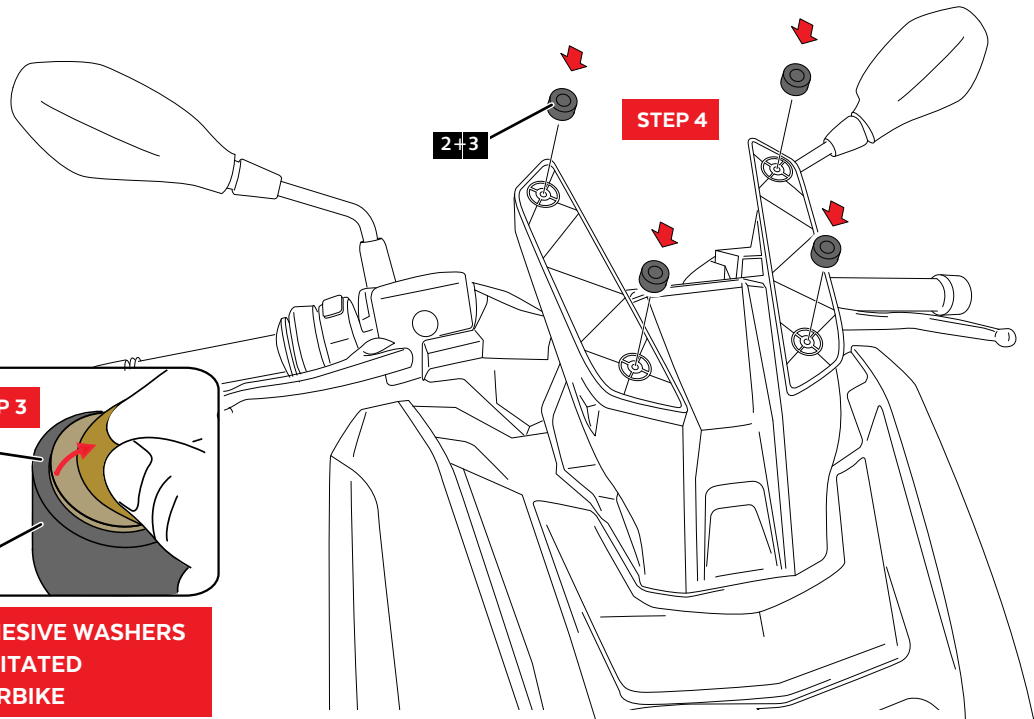
STEP 2



STEP 3

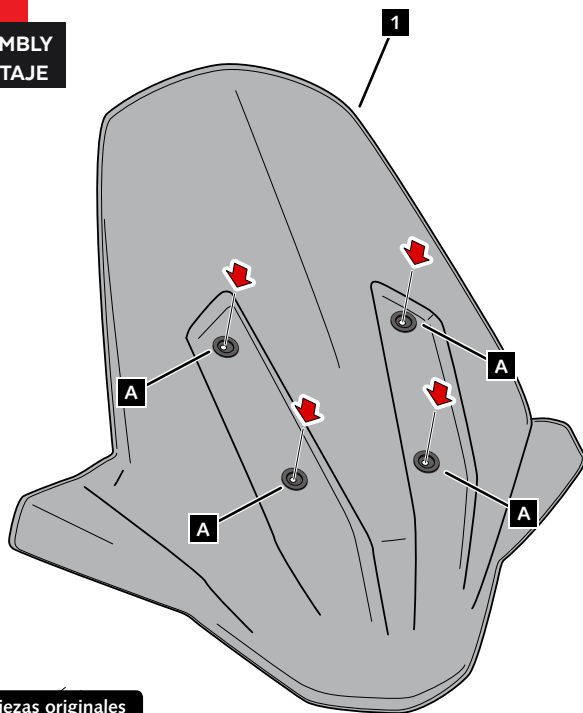


PUT THE ID.3 DOUBLE-SIDE ADHESIVE WASHERS ON ID.2 ARROWHEADS TO FACILITATED THE ASSEMBLY ON YOUR MOTORBIKE



4

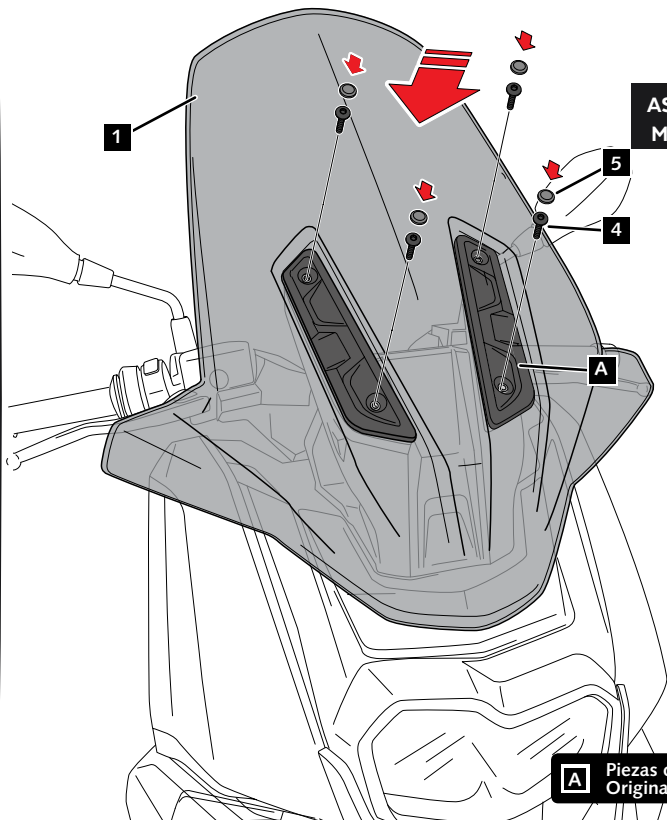
ASSEMBLY
MONTAJE



A Piezas originales
Original parts

5

ASSEMBLY
MONTAJE



A Piezas originales
Original parts

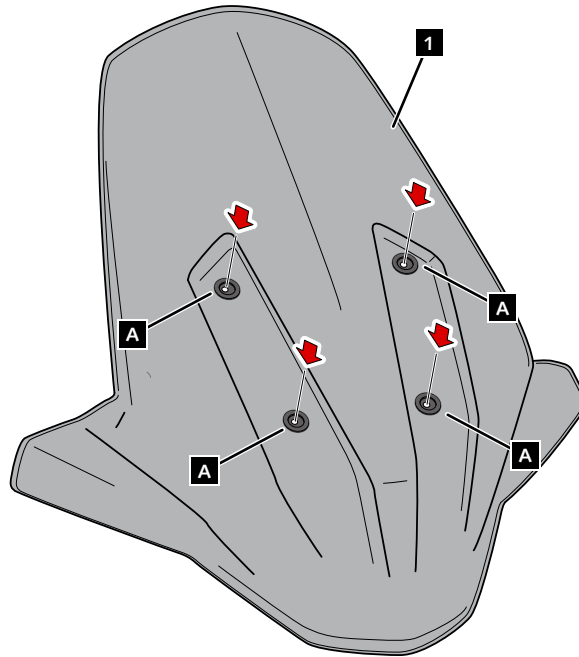
BMW C400X '19-

INSTRUCCIONES DE MONTAJE - MOUNTING INSTRUCTIONS - MONTAGEANLEITUNG

3

ASSEMBLY
MONTAJE

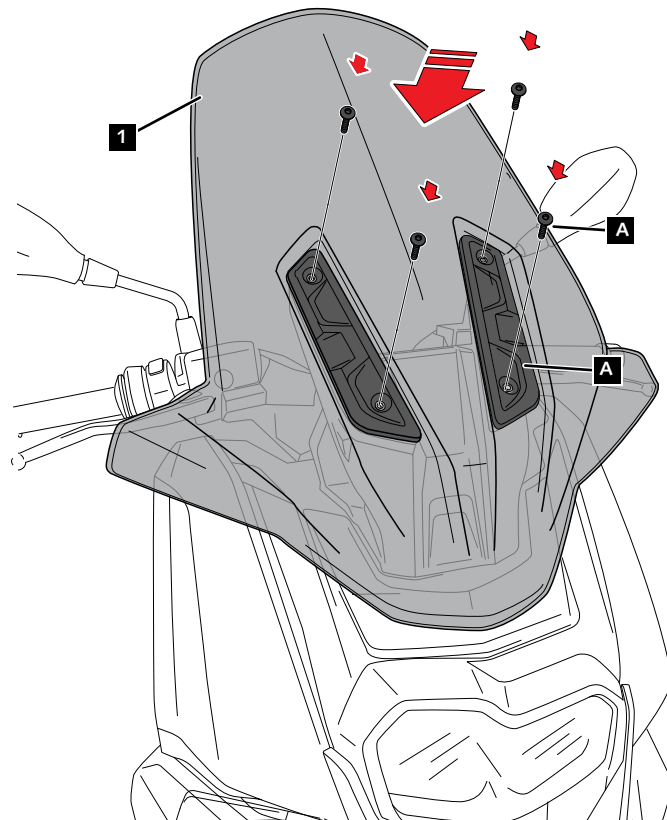
BMW C400X '19 - '24



A Piezas originales
Original parts

4

ASSEMBLY
MONTAJE



A Piezas originales
Original parts