

YAMAHA NMAX 125 '25-

M O U N T I N G I N S T R U C T I O N S

REF 22407

V-TECH LINE TOURING



1 Person



15 min



EASY

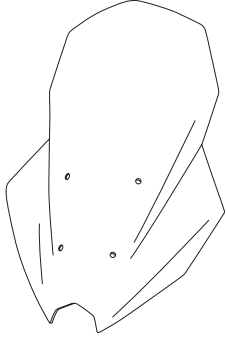
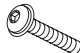


PHILLIPS
SCREWDRIVER



ALLEN
Nº 3



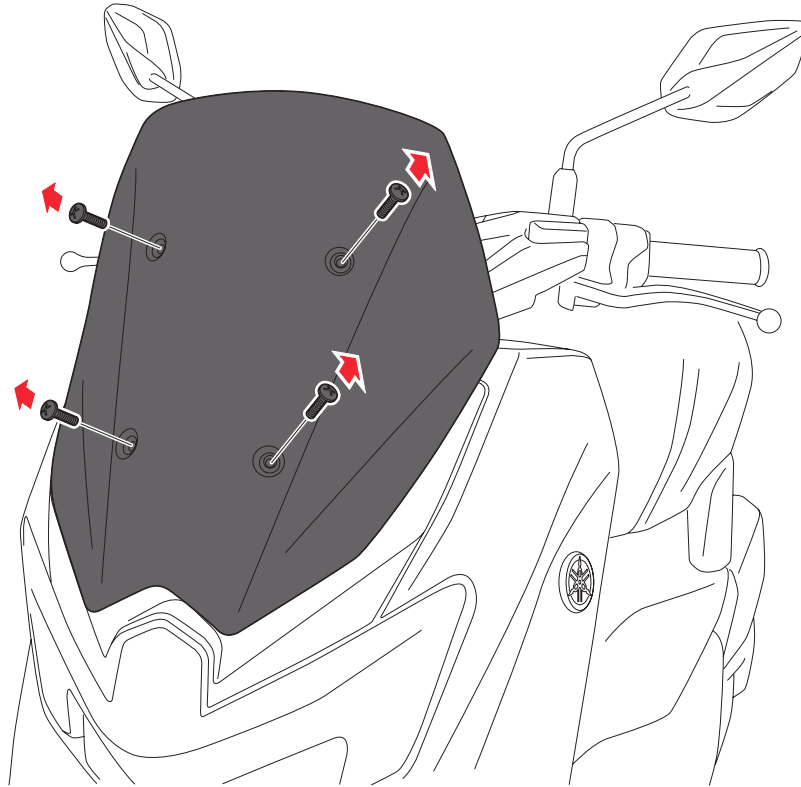
ID	PIEZA/PART	DESCRIPCIÓN	DESCRIPTION	QTY	REF
1		Cúpula touring	Touring screen	1	22407W/HM3
2		Tornillo Allen M5x60 Ø14 ISO 7380	M5x60 Ø14 ISO 7380 Allen screw	4	TORNI-I7380-957
3		Casquillo Ø8,5 x Ø14x 30mm	Ø8,5 x Ø14x 30mm Arrowhead	2	CASQUI-----149
4		Casquillo Ø8,5 x Ø14x 18mm	Ø8,5 x Ø14x 18mm Arrowhead	2	CASQUI-----0139
5		Arandela cinta de doble cara Ø14xØ8,5	Ø14xØ8,5 double-side adhesive washer	2	ARANDDOBLE22410
6		Silentblock Ø9xØ6x8	Ø9xØ6x8 Silentblock	4	AROPASACABLES-3
7		Casquillo con valona Ø12xØ6,8x7,3	Ø12xØ6,8x7,3 Bush with flange	4	CASQUI-1A---750
8		Tapón tornillo M5 ISO 7380	M5 ISO 7380 Screw cap	4	TAPON-----85

YAMAHA NMAX 125 '25-

INSTRUCCIONES DE MONTAJE - MOUNTING INSTRUCTIONS - MONTAGEANLEITUNG

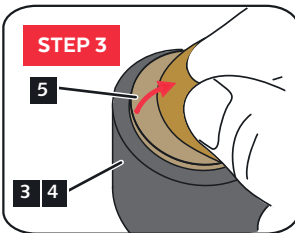
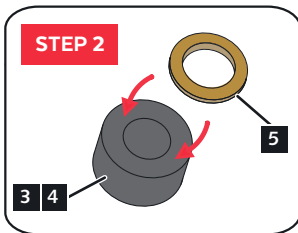
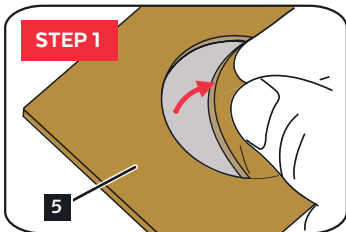
1

**DISASSEMBLY
DESMONTAJE**

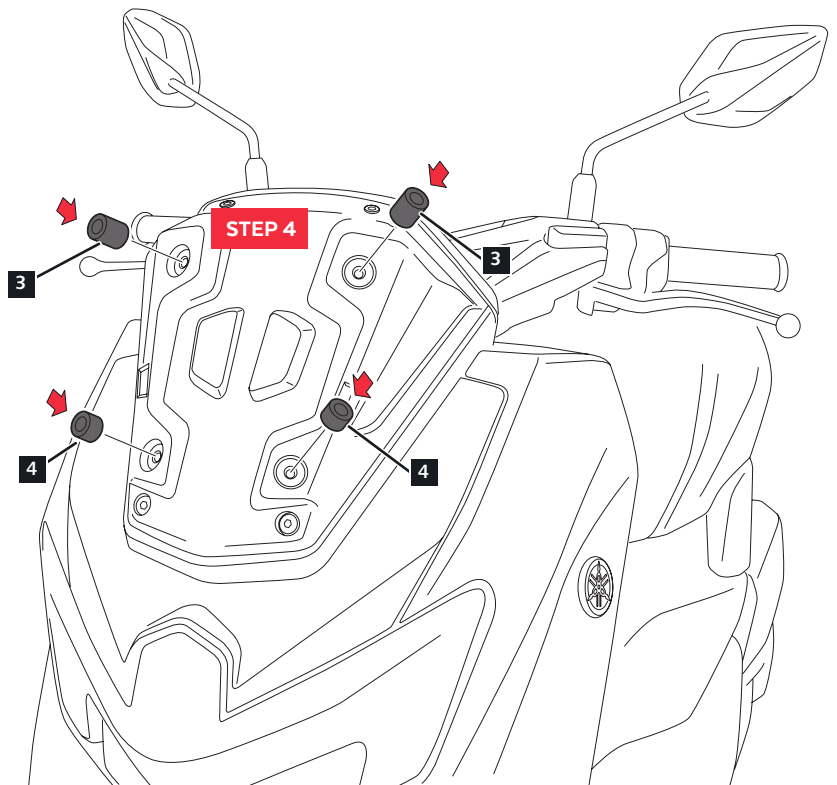


2

**ASSEMBLY
MONTAJE**



**PUT THE ID.5 DOUBLE-SIDE ADHESIVE WASHERS
ON ID.3 AND ID.4 ARROWHEADS TO FACILITATED
THE ASSEMBLY ON YOUR MOTORBIKE**

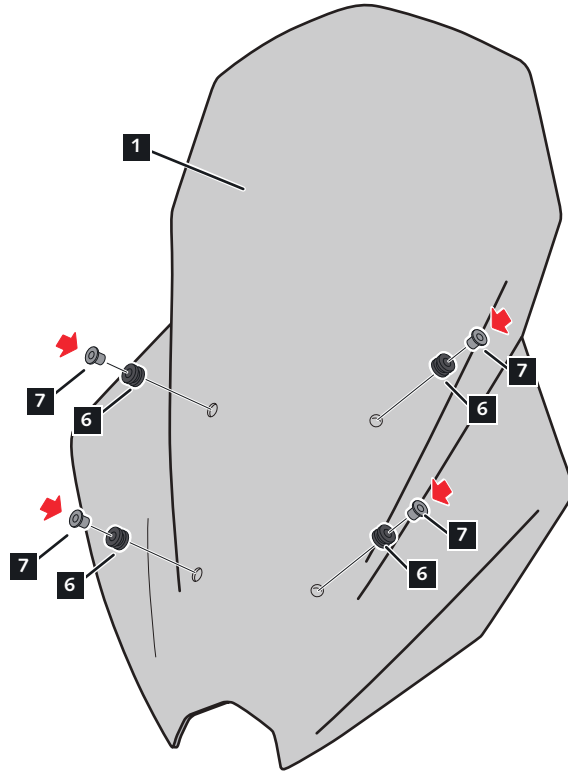


YAMAHA NMAX 125 '25-

INSTRUCCIONES DE MONTAJE - MOUNTING INSTRUCTIONS - MONTAGEANLEITUNG

3

ASSEMBLY
MONTAJE



4

ASSEMBLY
MONTAJE

