

# YAMAHA YZF R1 '15-

## M O U N T I N G I N S T R U C T I O N S

REF 21518N

TAPA ALTERNADOR / ALTERNATOR COVER

**ATENCIÓN:** Tapas con avisador de desgaste homologadas por la Federación Internacional de Motociclismo (FIM). Aptas para uso en competición.  
**ATTENTION:** Covers with a wear warning device approved by the International Motorcycling Federation (FIM). Suitable for use in competition.  
**ATTENTION:** Protections Carters avec temoins d'usure Homologues par la FIM (Federation Internationale de Motocyclisme). Convient pour un usage en competition.  
**ACHTUNG:** Abdeckungen mit einer von der International Motorcycling Federation (FIM) zugelassenen Verschleißwarnvorrichtung. Geeignet für den Einsatz im Wettkampf.



1 Person

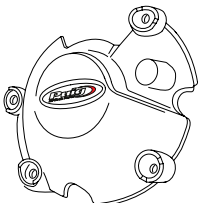
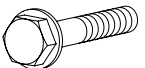


1 hour



EASY



ID.	PIEZA / PART	DESCRIPCIÓN	DESCRIPTION	QTY.	REF.:
1		Tapa alternador	Alternator cover	1	CONJUNTO--20127N
2		Tornillo M6x35 DIN6921	DIN6921 M6x35 screw	4	-

RECOMENDAMOS MONTAR LOS TORNILLOS APRETANDO UNIFORMEMENTE UNO TRAS OTRO, PARA APRETAR FINALMENTE CON DINAMOMÉTRICA  
 WE RECOMMEND TO MOUNT THE SCREWS UNIFORMLY TIGHTENING ONE AFTER THE OTHER, TO FINALLY TIGHTEN WITH DYNAMOMETRIC

**CONSULTAR EN NUESTRA PAGINA WEB LA DISPONIBILIDAD DEL VIDEO DE MONTAJE DE ESTA REFERENCIA.  
 CONSULT OUR WEBSITE THE VIDEO MOUNT AVAILABILITY OF THIS REFERENCE.**



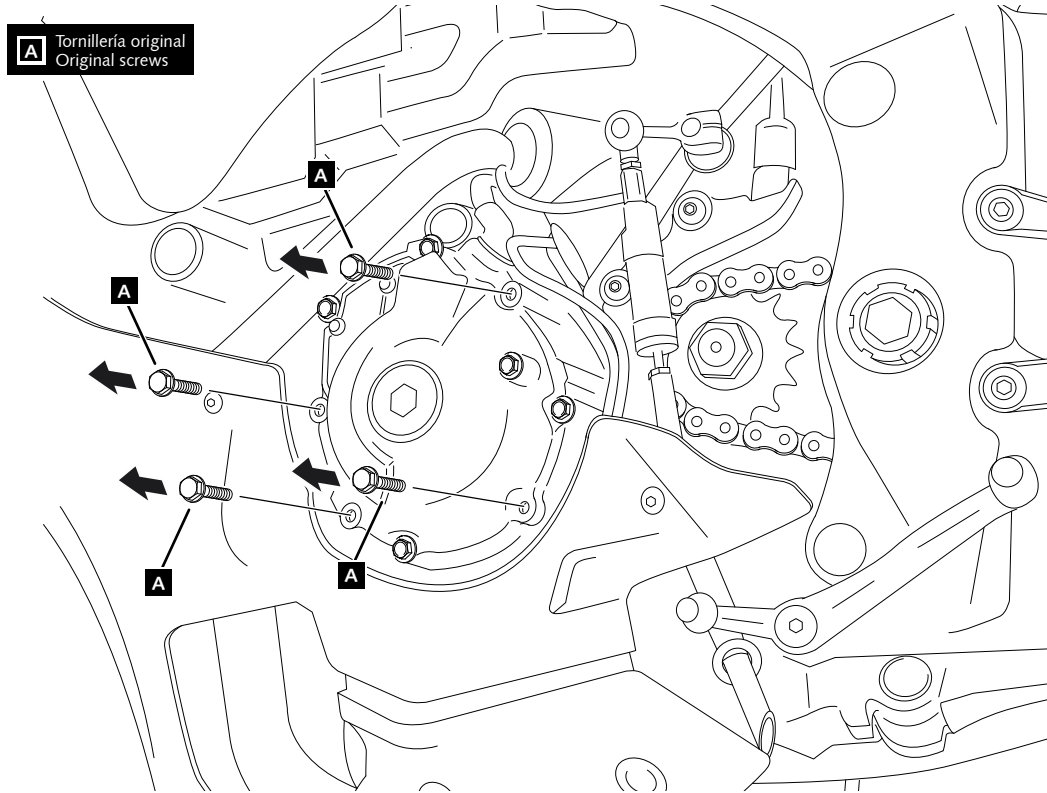
# YAMAHA YZF R1 '15-

REF 21518N

INSTRUCCIONES DE MONTAJE - MOUNTING INSTRUCTIONS - MONTAGEANLEITUNG

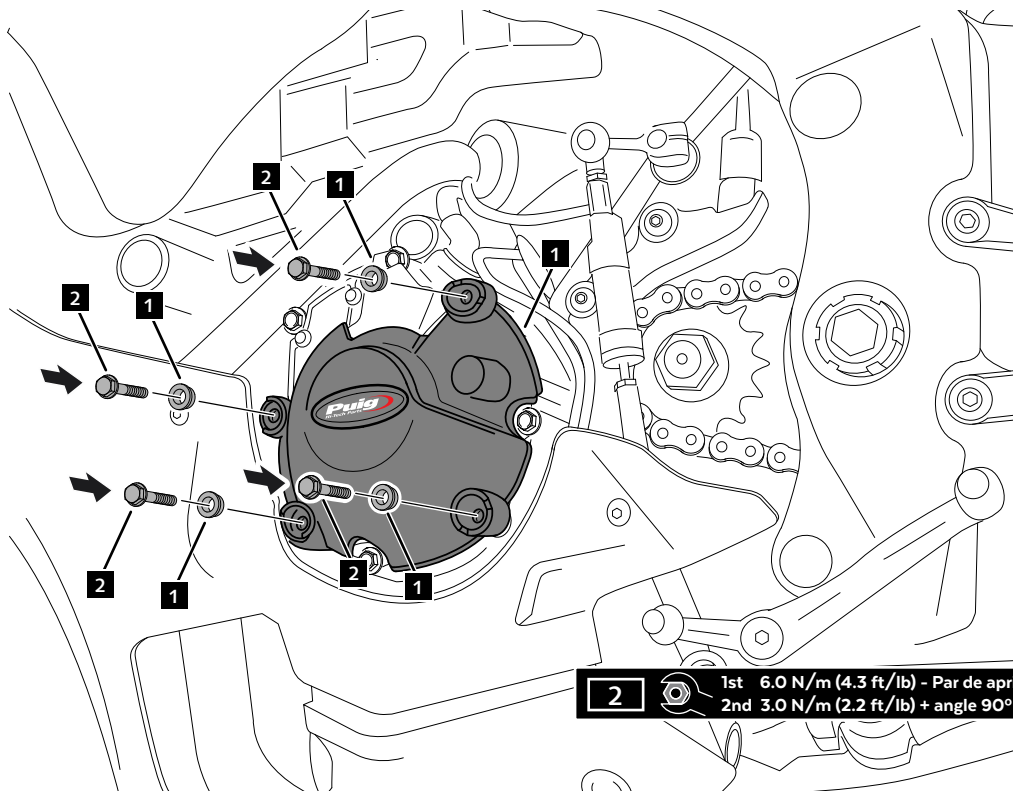
**1**

DISASSEMBLY  
DESMONTAJE



**2**

ASSEMBLY  
MONTAJE



Nº 10

# YAMAHA YZF R1 '15-

## M O U N T I N G I N S T R U C T I O N S

REF 21518N

TAPA EMGRAGUE / TAPA BOMBA AGUA  
CLUTCH COVER / WATER PUMP COVER



1 Person



1 hour



EASY



ID.	PIEZA / PART	DESCRIPCIÓN	DESCRIPTION	QTY.	REF.:
1		Tapa bomba de agua	Water pump cover	1	CONJUNTO--20127N
2		Tapa embrague	Clutch cover	1	CONJUNTO--20127N
3		Tornillo M6x35 DIN6921	M6x35 DIN6921 screw	4	-
4		Tornillo M6x45 DIN6921	M6x45 DIN6921 screw	2	-
5		Tornillo M6x50 DIN6921	M6x50 DIN6921 screw	2	-

RECOMENDAMOS MONTAR LOS TORNILLOS APRETANDO UNIFORMEMENTE UNO TRAS OTRO, PARA APRETAR FINALMENTE CON DINAMOMÉTRICA  
WE RECOMMEND TO MOUNT THE SCREWS UNIFORMLY TIGHTENING ONE AFTER THE OTHER, TO FINALLY TIGHTEN WITH DYNAMOMETRIC

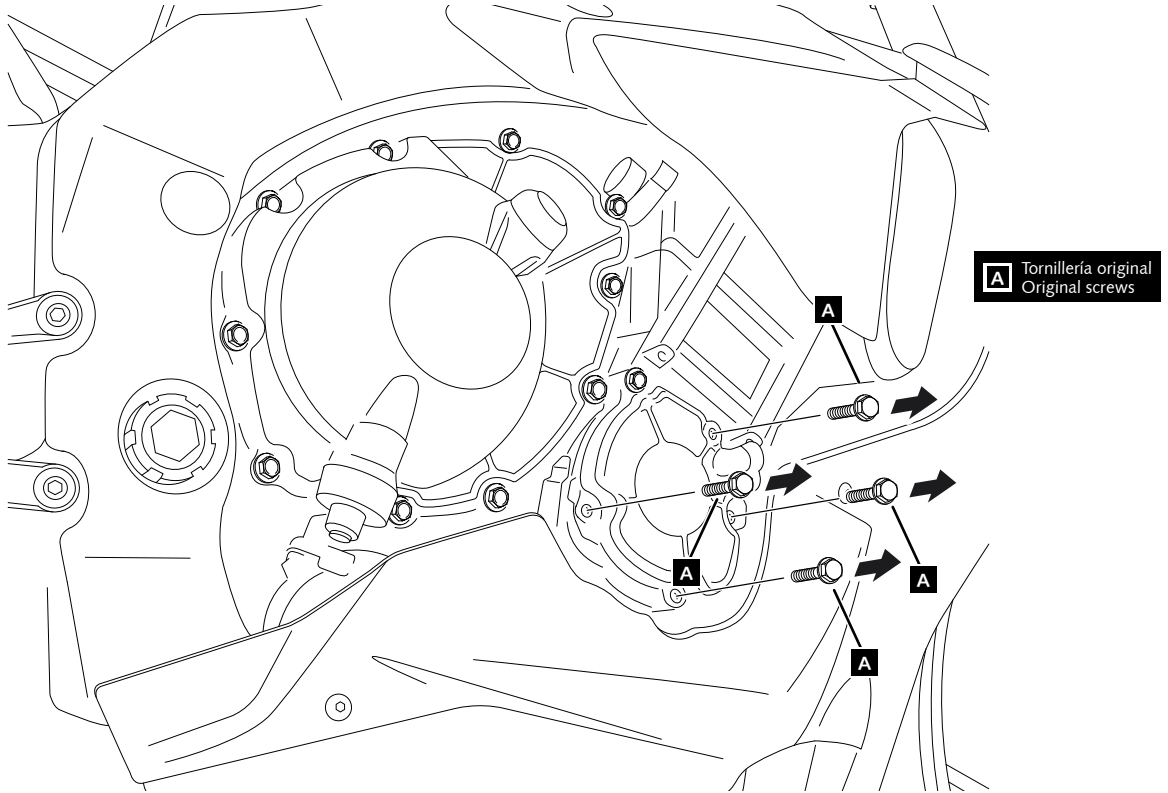
# YAMAHA YZF R1 '15-

REF 21518N

INSTRUCCIONES DE MONTAJE - MOUNTING INSTRUCTIONS - MONTAGEANLEITUNG

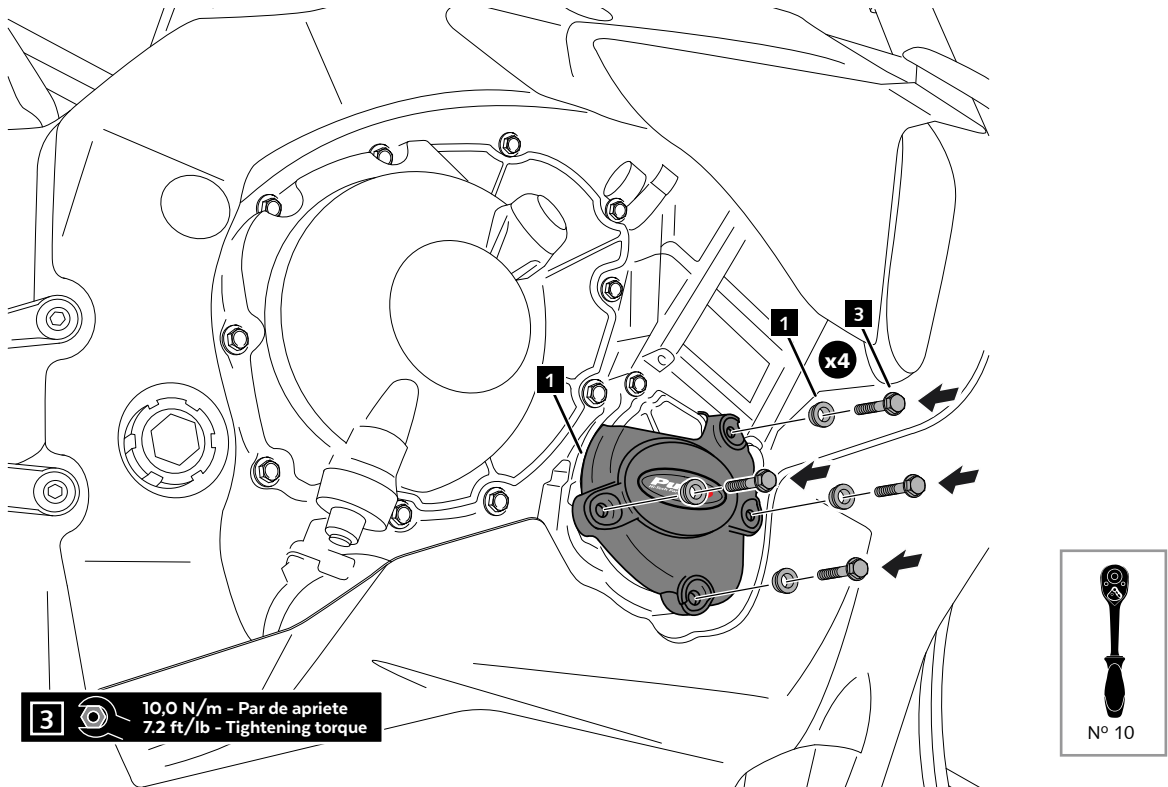
**1**

**DISASSEMBLY  
DESMONTAJE**



**2**

**ASSEMBLY  
MONTAJE**



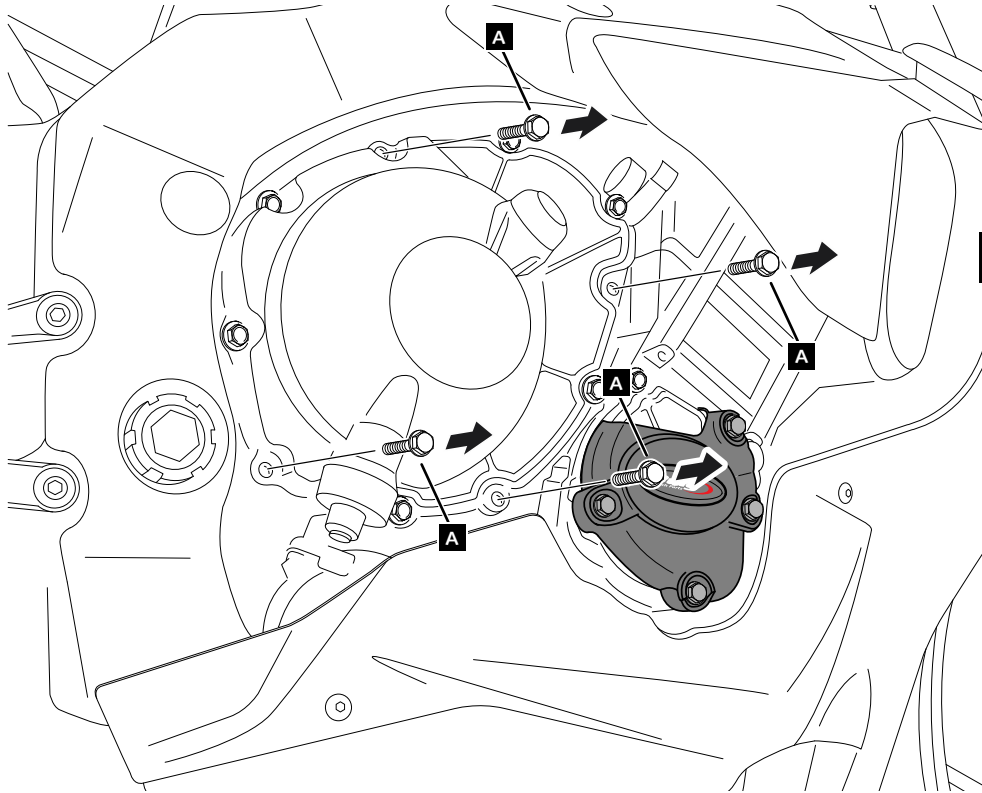
# YAMAHA YZF R1 '15-

REF 21518N

INSTRUCCIONES DE MONTAJE - MOUNTING INSTRUCTIONS - MONTAGEANLEITUNG

**3**

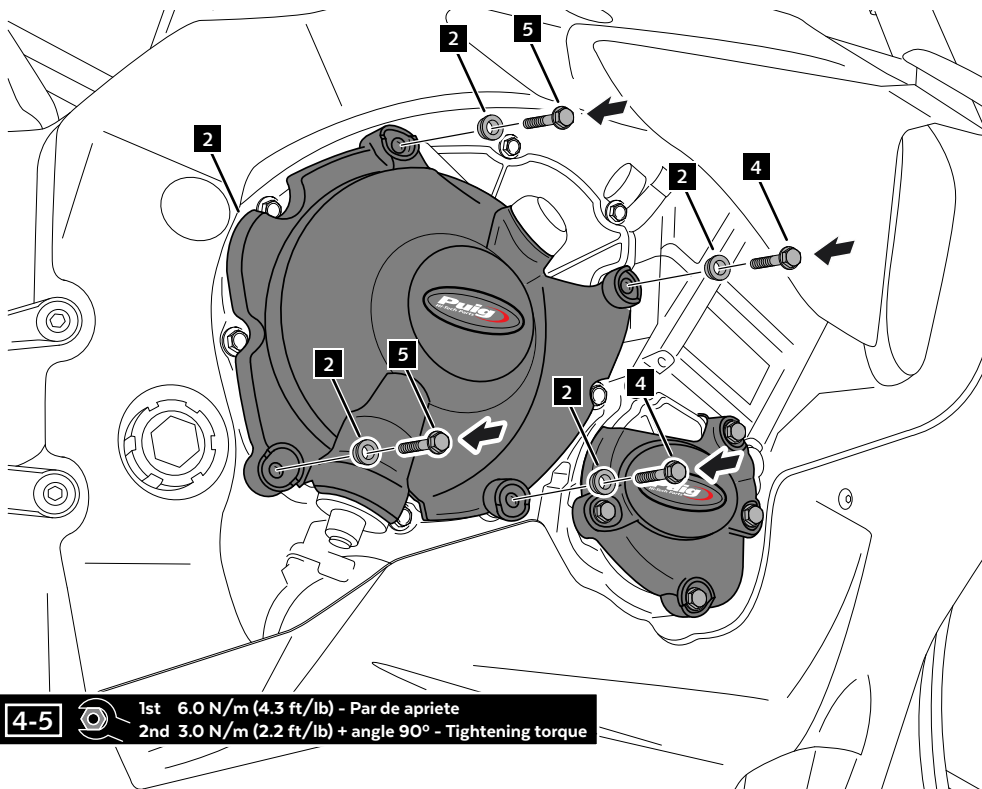
DISASSEMBLY  
DESMONTAJE



**A** Tornillería original  
Original screws

**4**

ASSEMBLY  
MONTAJE



**4-5** 1st 6.0 N/m (4.3 ft/lb) - Par de apriete  
2nd 3.0 N/m (2.2 ft/lb) + angle 90° - Tightening torque

