

BMW S1000XR '20-

M O U N T I N G I N S T R U C T I O N S

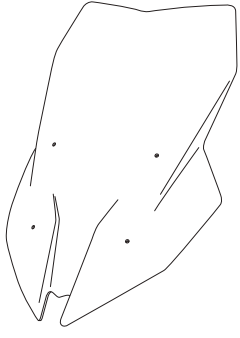
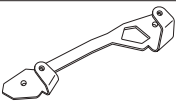
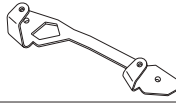





REF 20447

TOURING SCREEN



TORX
T25

ALLEN
Nº 3

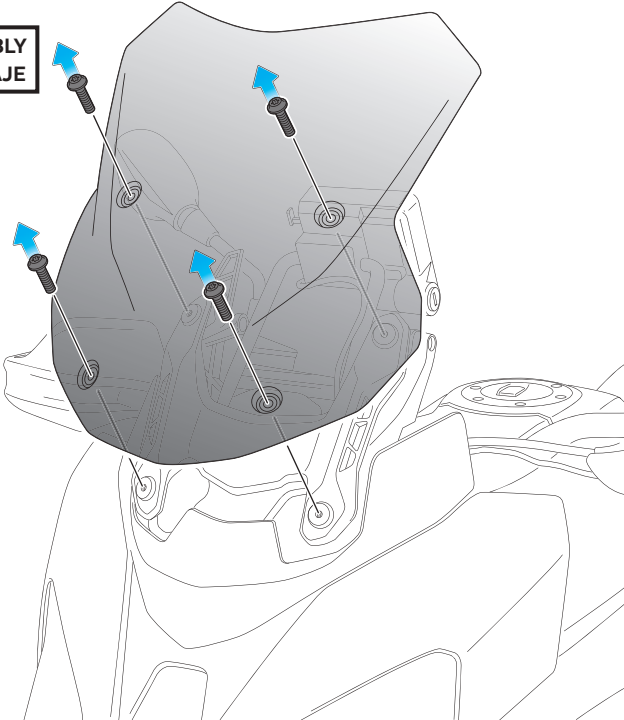
| ID | PIEZA/PART | DESCRIPCIÓN | DESCRIPTION | QTY | REF |
|----|---|-------------------------------------|-----------------------------------|-----|-----------------|
| 1 |  | Cúpula Touring | Touring screen | 1 | 10798F/H/N/WM3 |
| 2 |  | Soporte derecho | Right support | 1 | SOPOR2P4-R20447 |
| 3 |  | Soporte izquierdo | Left support | 1 | SOPOR2P4-L20447 |
| 4 |  | Silentblock Ø9xØ6x8mm | Ø9xØ6x8mm silentblock | 4 | AROPASACABLES-3 |
| 5 |  | Casquillo con valona Ø12xØ6,8x7,3mm | Ø12xØ6,8x7,3mmmm bush with flange | 4 | CASQUI-1A---750 |
| 6 |  | Tornillo Allen M5X16 Ø11 ISO 7380 | M5X16 Ø11 ISO 7380 Allen screw | 4 | TORNI-I7380-493 |
| 7 |  | Tornillo Allen M5X11 Ø11 ISO 7380 | M5X11 Ø11 ISO 7380 Allen screw | 4 | TORNI-AI---520 |
| 8 |  | Tapón tornillo Allen M5 ISO 7980 | M5 ISO 7980 Allen cap screw | 4 | TAPON-----85 |

BMW S1000XR '20-

INSTRUCCIONES DE MONTAJE - MOUNTING INSTRUCTIONS - MONTAGEANLEITUNG

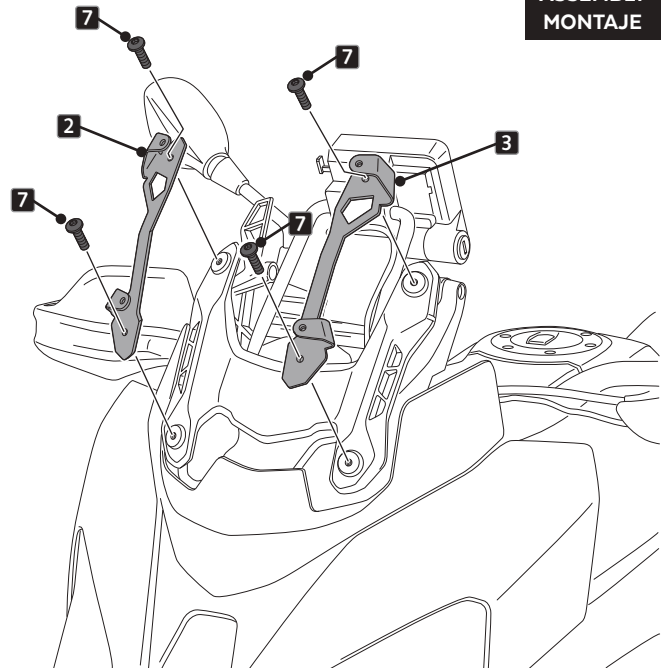
1

DISASSEMBLY
DESMONTAJE



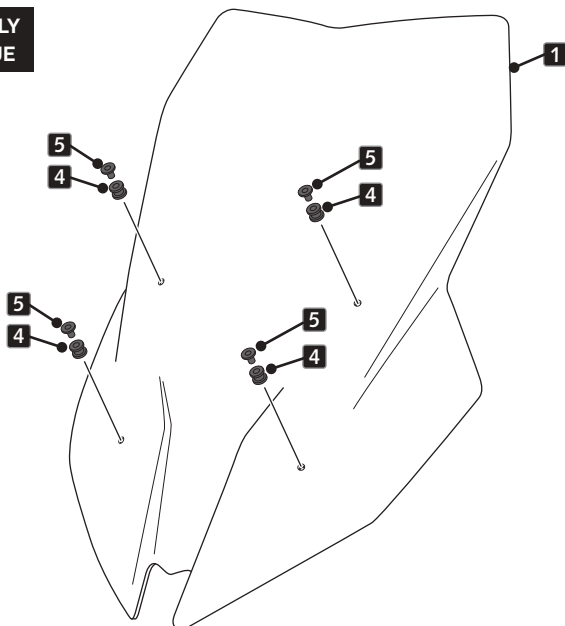
2

ASSEMBLY
MONTAJE



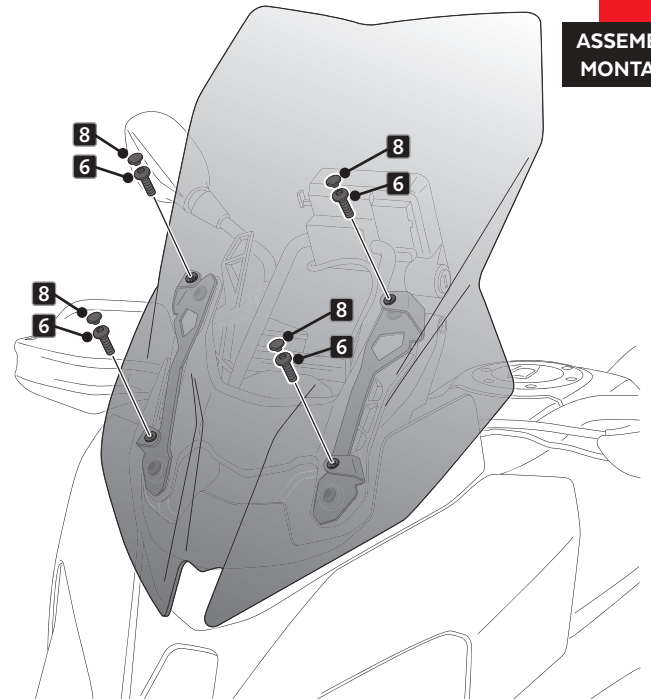
3

ASSEMBLY
MONTAJE



4

ASSEMBLY
MONTAJE



VISERA MULTIREGULABLE MULTI-ADJUSTABLE VISOR

CÚPULA TIPO
TYPE WINDSCREEN **A**



CÚPULA TIPO
TYPE WINDSCREEN **B**



CÚPULA TIPO
TYPE WINDSCREEN **C**



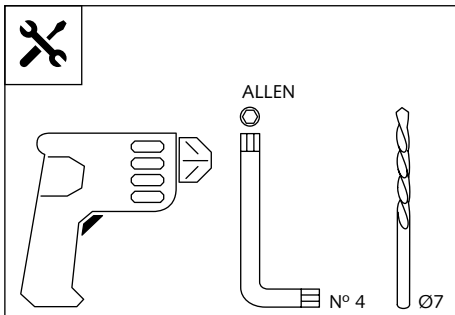
Ref.: 6007

Ref.: 5852

Ref.: 5853

Ahumado/Smoke

Transparente/Clear



1 persona
1 person



15 min

Fácil - Easy

Media-Intermediate

Difícil-Difficult

Nota/Note:

Si la visera se suministra con la cúpula Puig, no será necesario realizar los agujeros por que ya vienen incorporados.

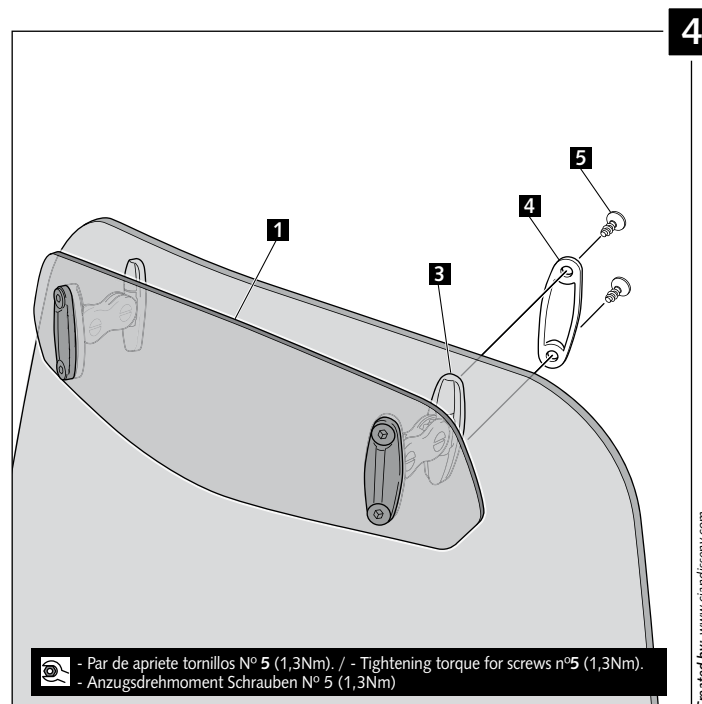
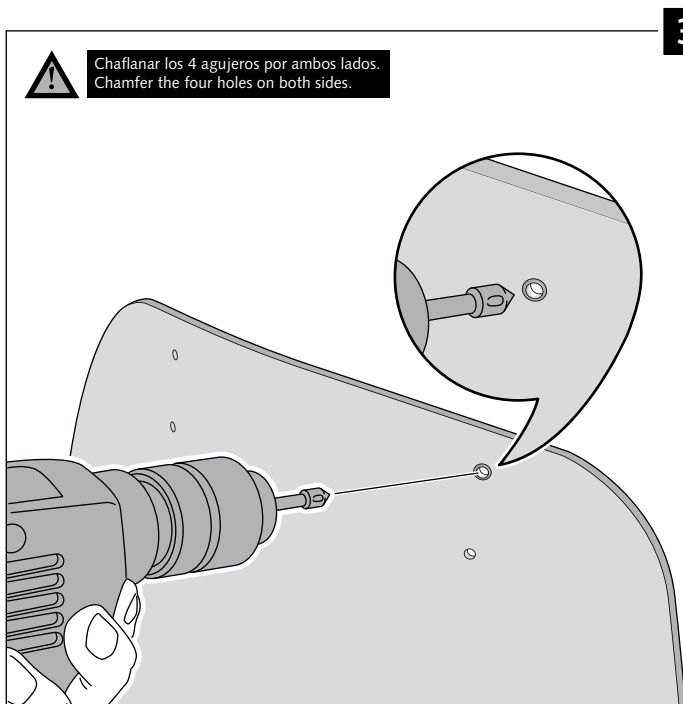
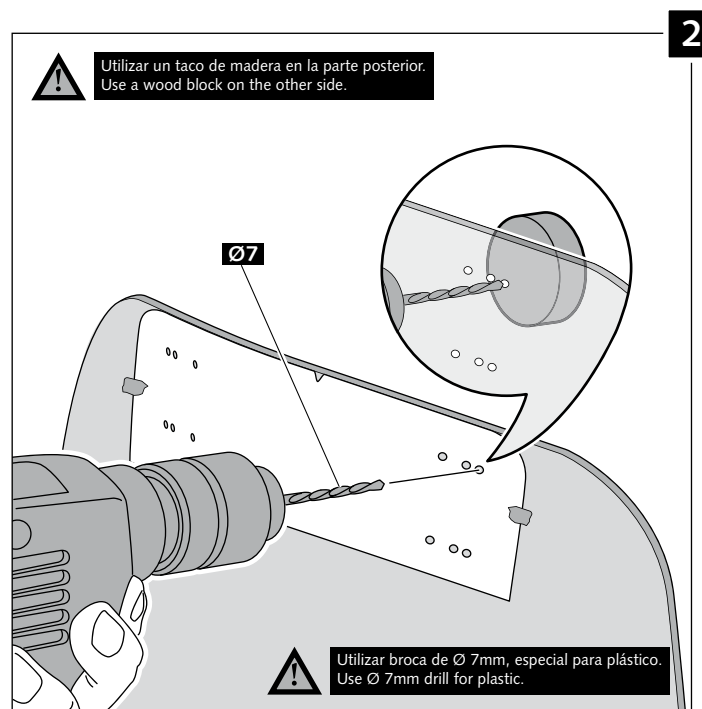
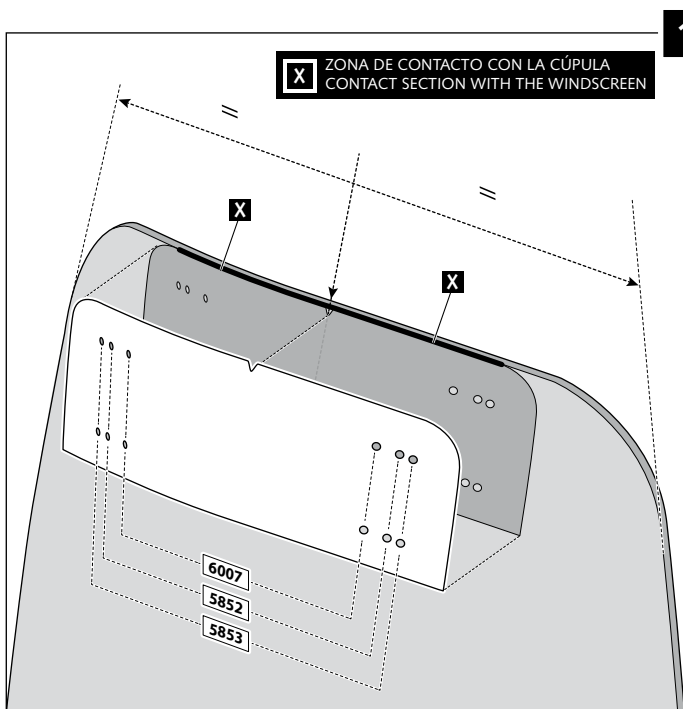
If the visor is supplied along with the windscreen, the windscreen will come factory-drilled so no drilling is necessary.

| ID. | PIEZA / PART | DESCRIPCIÓN | DESCRIPTION | QTY. |
|-----|--------------|-------------------------------|-------------------------------|------|
| 1 | | Visera | Visor | 1 |
| 2 | | Plantilla | Template | 1 |
| 3 | | Mecanismo multiregulable | Multi-adjustable mechanism | 2 |
| 4 | | Tapeta | Cap | 4 |
| 5 | | Tornillo rosca plástico M6x12 | Plastic thread fastener M6x12 | 8 |

VISERA MULTIREGULABLE MULTI-ADJUSTABLE VISOR

INSTRUCCIONES DE MONTAJE - MOUNTING INSTRUCTIONS - MONTAGEANLEITUNG

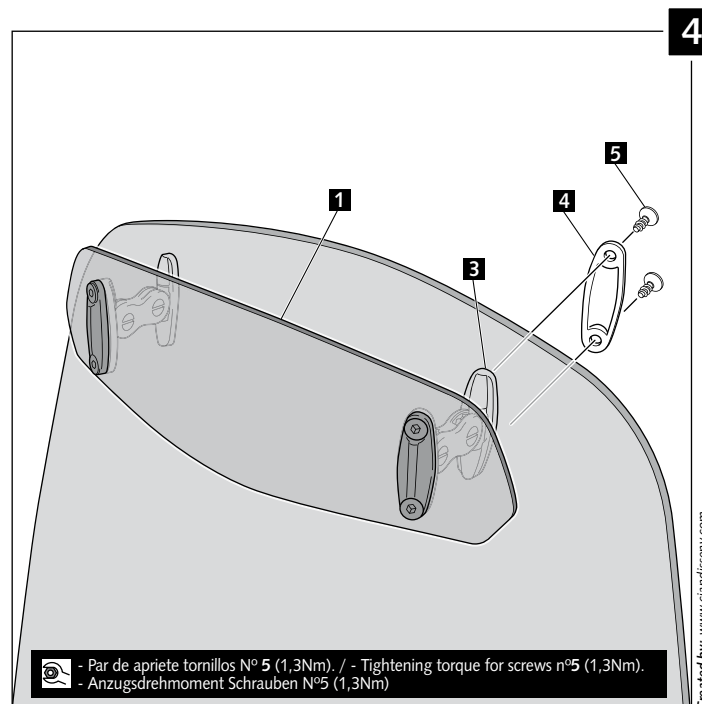
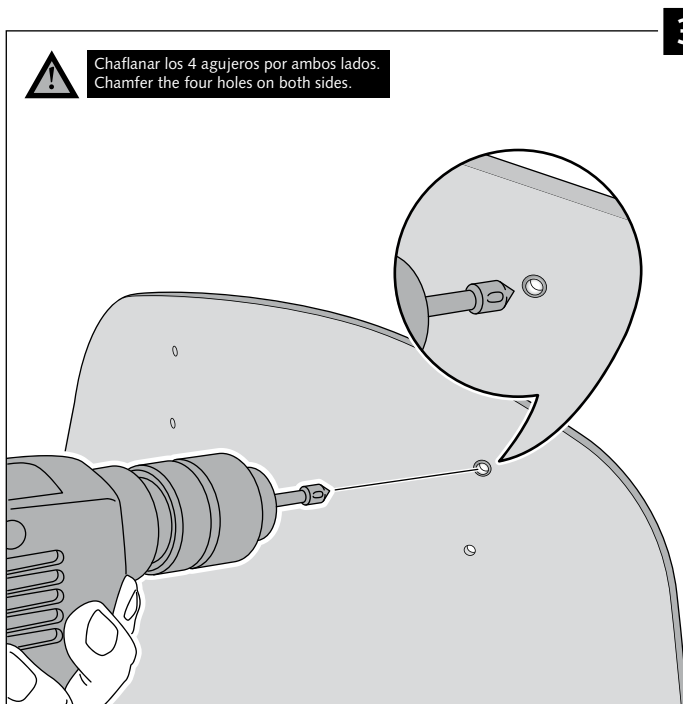
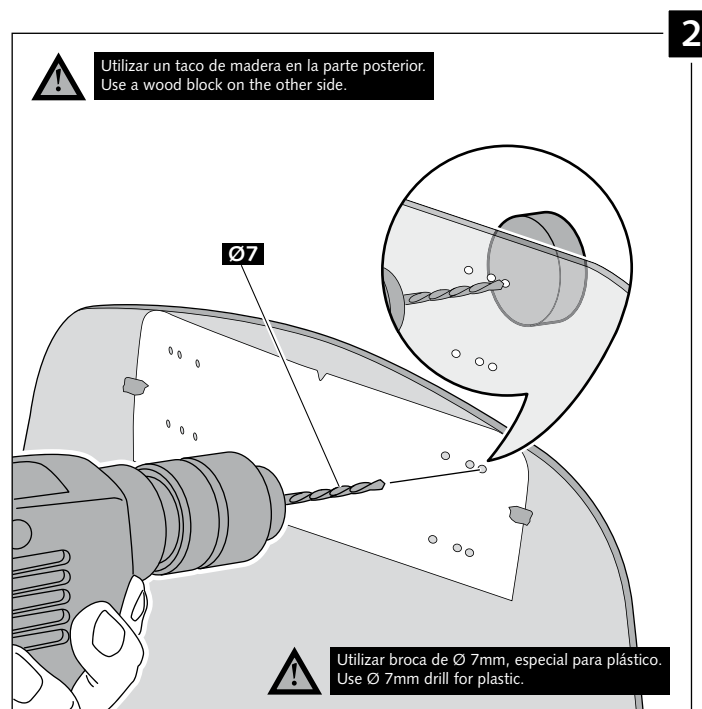
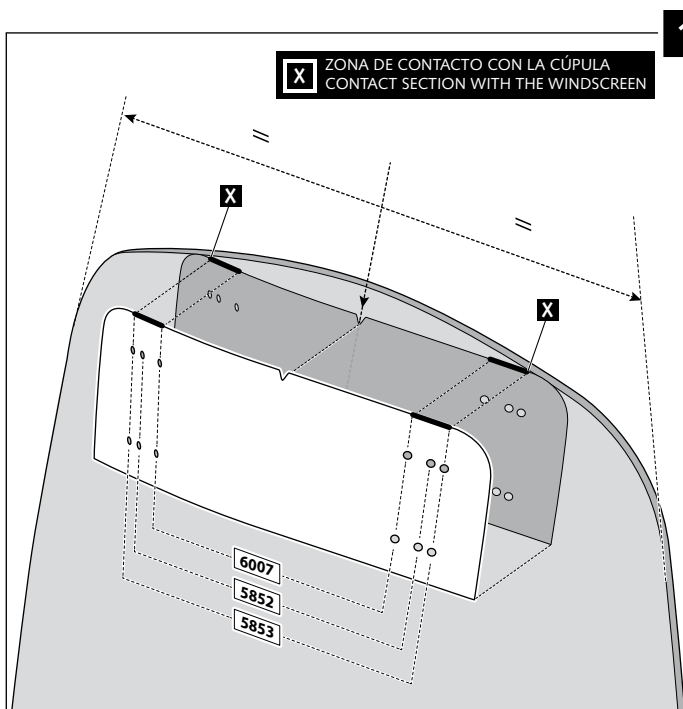
TIPO/TYPER A - TIPO/TYPER A - TIPO/TYPER A



VISERA MULTIREGULABLE MULTI-ADJUSTABLE VISOR

INSTRUCCIONES DE MONTAJE - MOUNTING INSTRUCTIONS - MONTAGEANLEITUNG

TIPO/TYPER B - TIPO/TYPER B - TIPO/TYPER B



VISERA MULTIREGULABLE MULTI-ADJUSTABLE VISOR

INSTRUCCIONES DE MONTAJE - MOUNTING INSTRUCTIONS - MONTAGEANLEITUNG

TIPO/TYPER C - TIPO/TYPER C - TIPO/TYPER C

